



***Industrial Opportunity
For Lease - 29,770 SF***

**Class A Warehouse Immediately
Available in Weston, Florida**

Leasing Information

**Timothy Talbot | Andrew Ackerman
(954) 385-0000**

Located near the Enterprise Avenue entrance of the Meridian Business Campus in Weston, 3350 Enterprise Avenue offers an attractive and efficient destination for distribution users.

Screened, high-density loading facilities combined with private entries along an extensive lake system create a functional and high image environment; as well as meticulous landscaping, in keeping with the high standards of the Meridian Business Campus.



Property Features

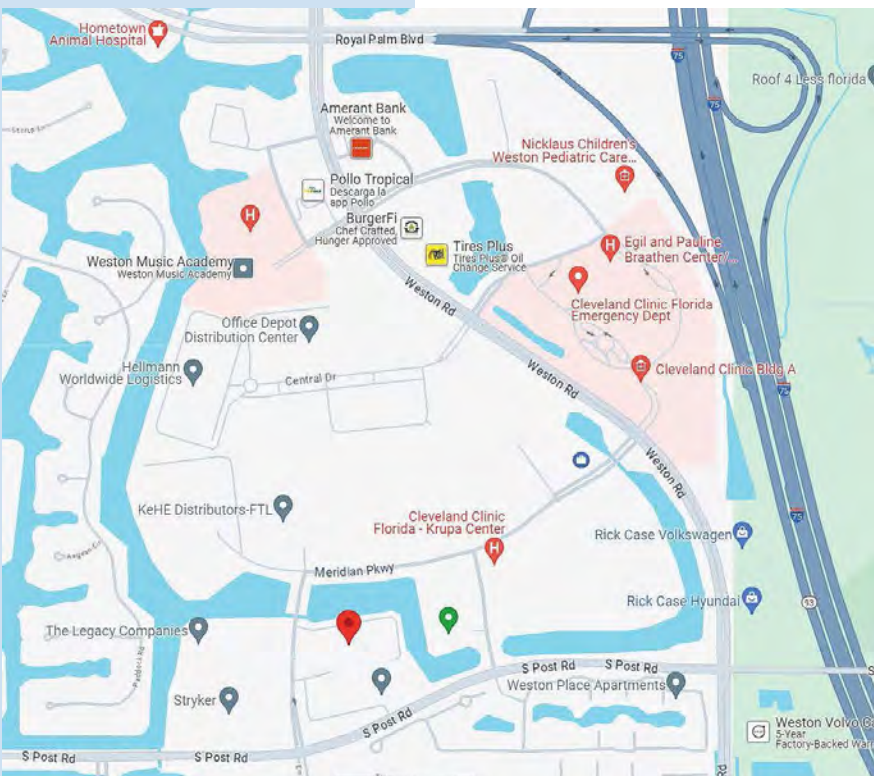
- Suite 160 - 29,770 SF (Office - 5,994 SF)
- 24' Clear Ceiling Height
- 6 Dock Doors (Five Dock-High, 1 Concrete Ramp)
- Separation of Auto & Truck Traffic
- 126,775 SF Industrial Building
- Full Service On-Site Property Management
- Ample Parking Available
- Close Proximity to Shopping, Restaurants, Banking, Hollywood-Fort Lauderdale International Airport
- Minutes to I-75, South of I-595 & the Sawgrass Expressway



MERIDIAN

BUSINESS CAMPUS AT WESTON

3350 Enterprise Avenue
Weston, FL 33331



Location, Location, Location!

Weston Road Exposure
Cleveland Clinic
Minutes to Weston Town Center;
Fine Dining, Shopping, Local Events &
Entertainment
Starbucks, Publix, Banking
Bonaventure Golf Club
Walgreens Pharmacy
& Many More!

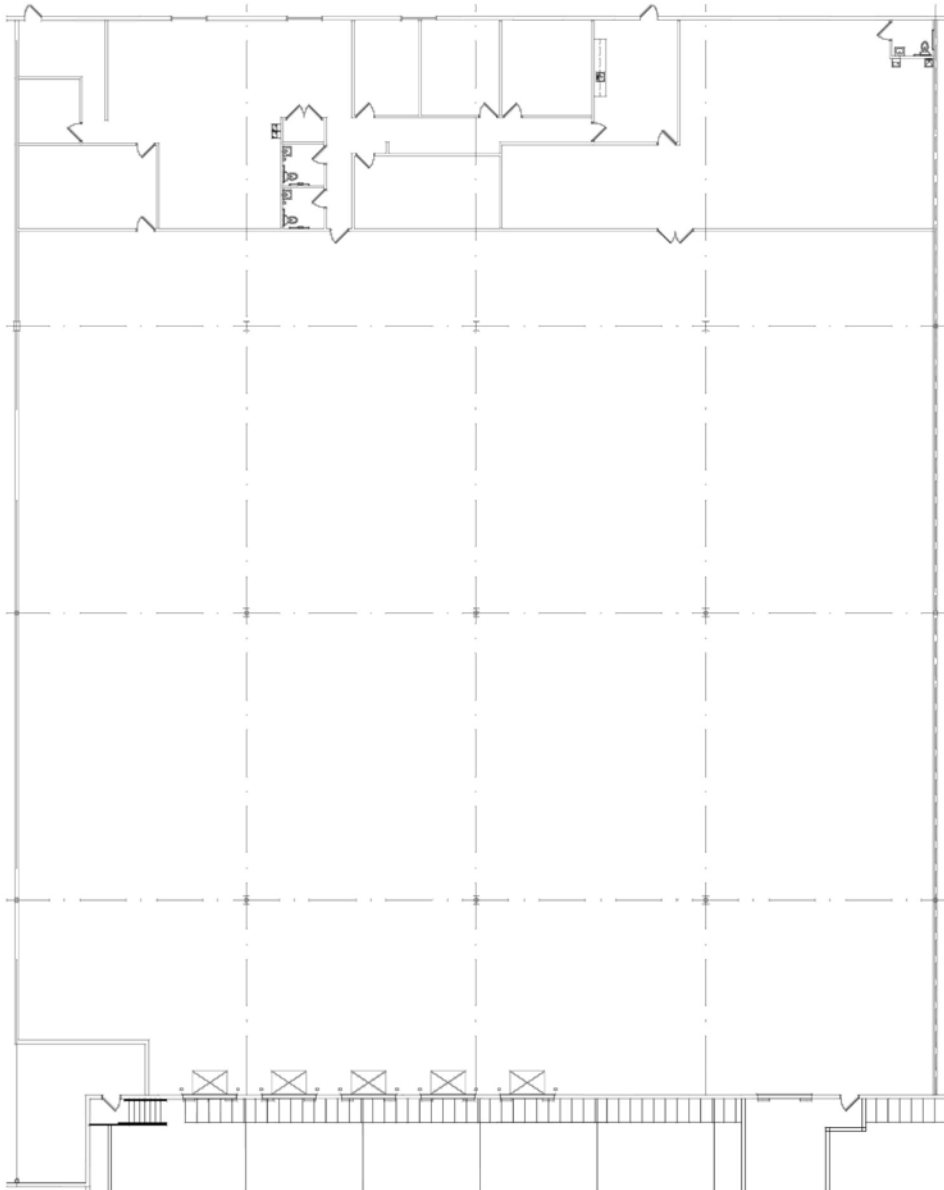
Leasing Information

Timothy Talbot | Andrew Ackerman
(954) 385-0000



Meridian Business Campus

3350 Enterprise Avenue, Weston, FL 33331



Suite 160 - 29,770 SF

FOR LEASING INFORMATION:

Timothy J. Talbot | ttalbot@comreal.com

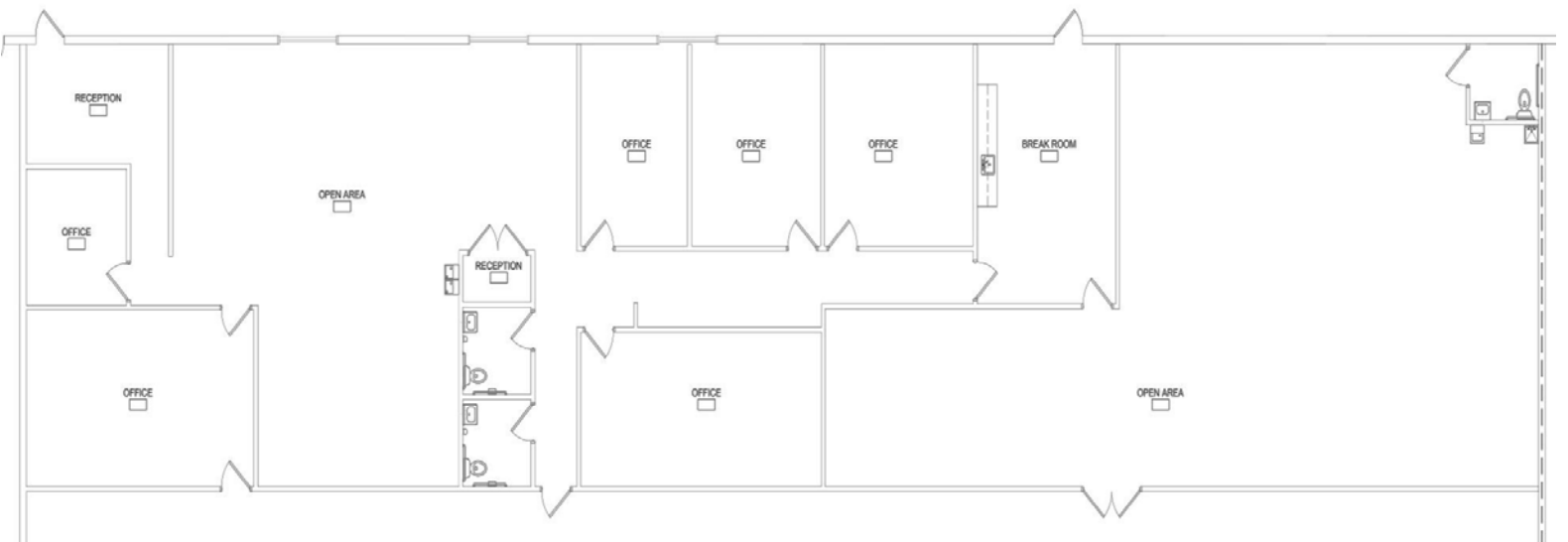
Andrew Ackerman | aackerman@comreal.com

954.385.0000



Meridian Business Campus

3350 Enterprise Avenue, Weston, FL 33331



Suite 160 Office - 5,994 SF

FOR LEASING INFORMATION:

Timothy J. Talbot | ttalbot@comreal.com

Andrew Ackerman | aackerman@comreal.com

954.385.0000

