



*Las Olas Centre II*

350 East Las Olas Boulevard  
Fort Lauderdale, FL 33301

*Suite 1000 Photo Package*  
*23,381 Square Feet*







**Reception area with multiple conference rooms  
(all glass; East view)**



**Reception/conference room area**



**Conference Room/Reception Area**



**Inside Large Conference Room**





**Another view of large conference room  
(\*Note: built-in room divider)**

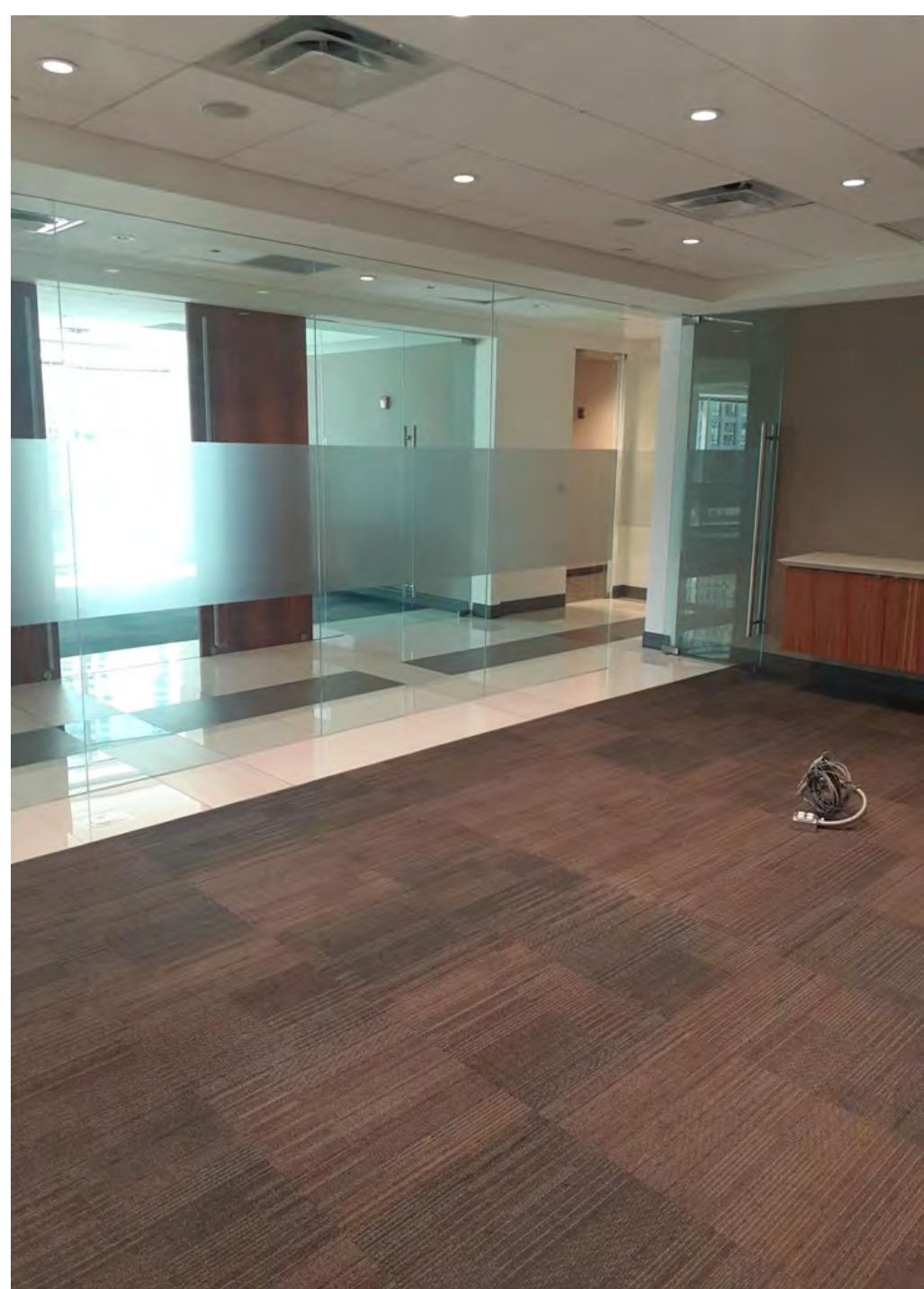


**Closer look at amazing reception  
area flooring**





**Side conference room (near reception area)**



**Inside side conference room  
(near reception area)**



**Hallway leading to reception  
(multiple glass conference rooms)**



**Coffee station/catering facility for  
conference rooms**





[VTS Market Listing](#)

[VTS 3D Market Tour](#)

*Suite 1000 - 23,381 Square Feet*



*For Leasing Information:*

Timothy J. Talbot

[ttalbot@comreal.com](mailto:ttalbot@comreal.com)

(954) 385-0000 Office

(954) 292-9043 Cell

Andrew Ackerman

[aackerman@comreal.com](mailto:aackerman@comreal.com)

(954) 385-0000 Office

(954) 980-5116 Cell

*ComReal Fort Lauderdale  
3050 Universal Blvd., Suite 100  
Weston, FL 33331*

[www.comrealfortlauderdale.com](http://www.comrealfortlauderdale.com)

[www.lasolascentre.com](http://www.lasolascentre.com)

