

Tarpon Village

1222 South Andrews Avenue, Fort Lauderdale, FL 33315



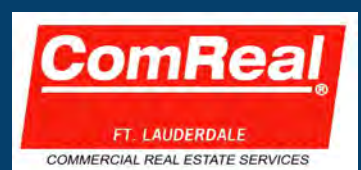
Tarpon Village is comprised of five, free-standing, single story office buildings. Located in the Downtown Fort Lauderdale Submarket, Tarpon Village is centrally located on the corner of Andrews Avenue and Davie Boulevard. Tarpon Village is situated moments from I-95 and I-595 and is less than two miles from the Fort Lauderdale/Hollywood International Airport.



For Lease Information:

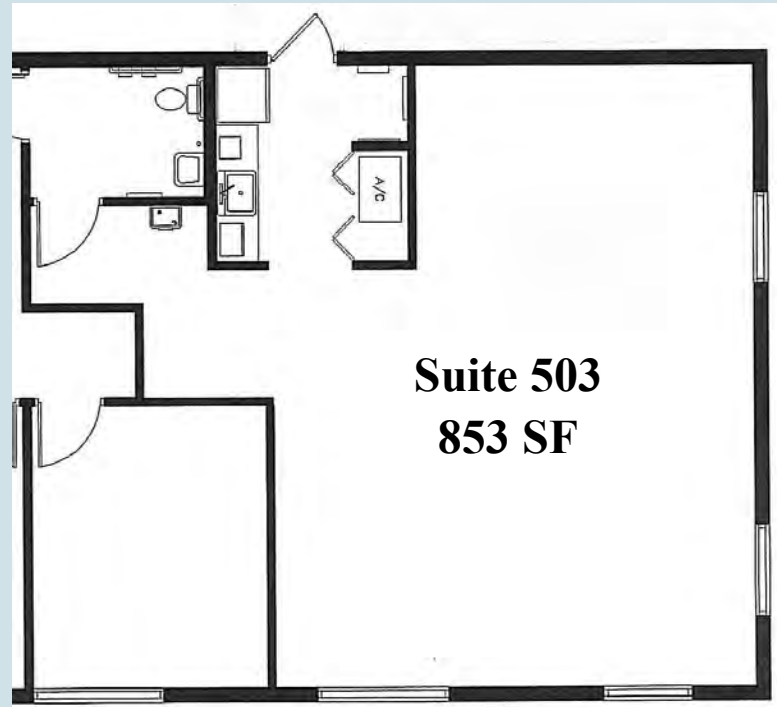
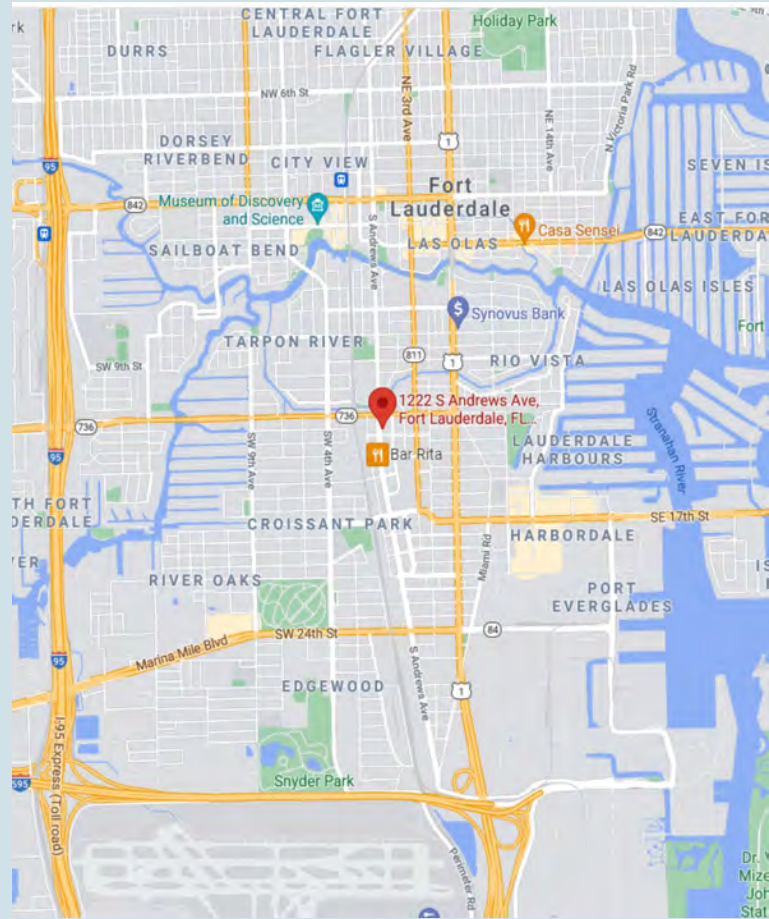
Brett Rowley
browley@comreal.com
954.385.0000

www.comrealfortlauderdale.com



BUILDING HIGHLIGHTS

- Building Signage Available
- For Lease: Suite 502 - 948 Square Feet
- 4.00/1,000 SF Parking Ratio
- Conveniently Located on the SE Corner of Andrews Ave. & Davie Blvd.
- One Mile From Downtown Ft. Lauderdale, Broward Courthouse, & North Broward Hospital
- Close Proximity to I-95, I-595, & Less Than 2 Miles From Fort Lauderdale-Hollywood Intl. Airport



For Lease
Suite 503 - 853 SF

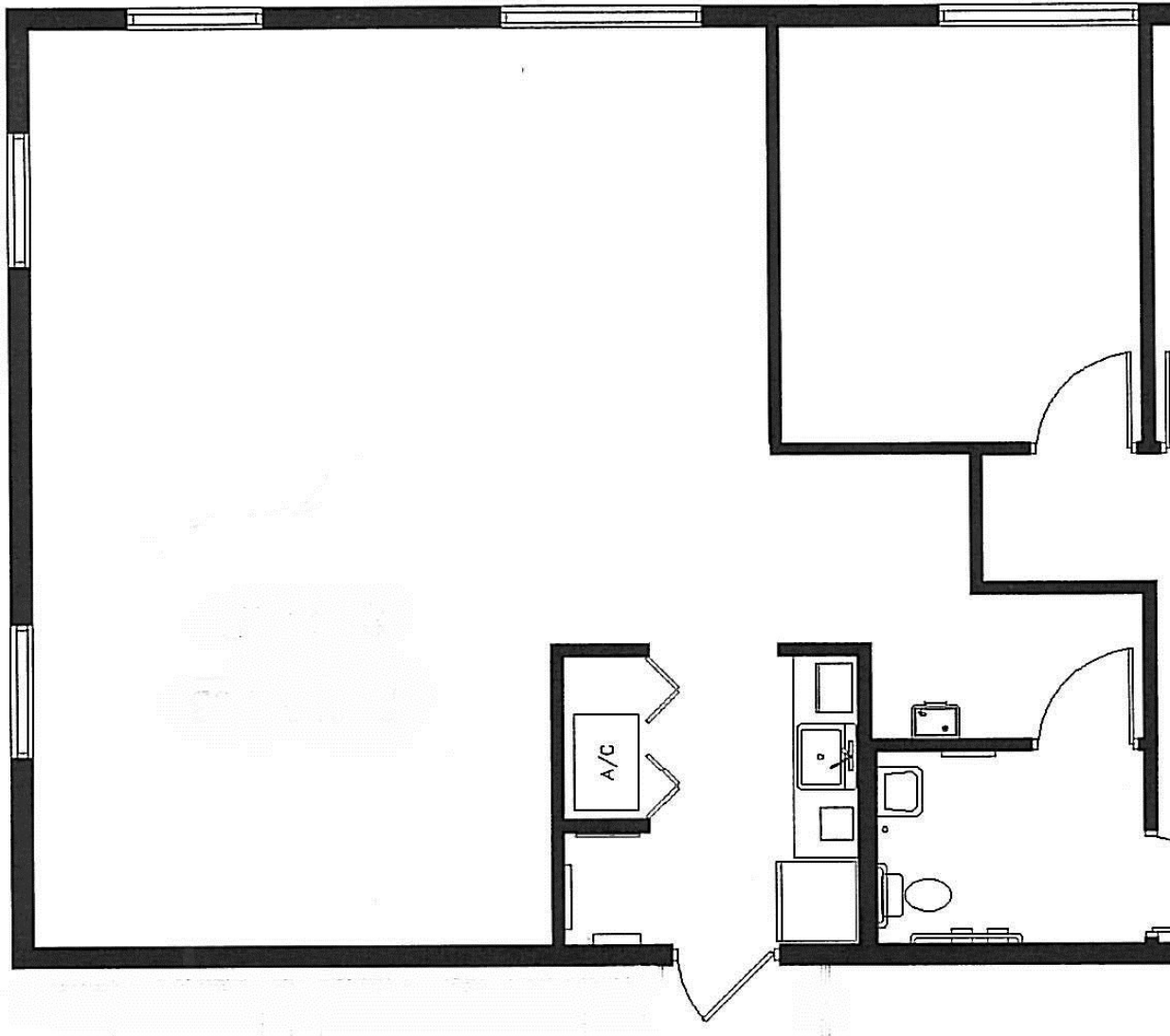
For Lease Information:

Brett Rowley
browley@comreal.com
954.385.0000



Tarpon Village

1222 S. Andrews Avenue, Fort Lauderdale, FL 33315



Suite 503 - 853 SF

FOR LEASING INFORMATION:

Brett Rowley | browley@comreal.com

954.385.0000

